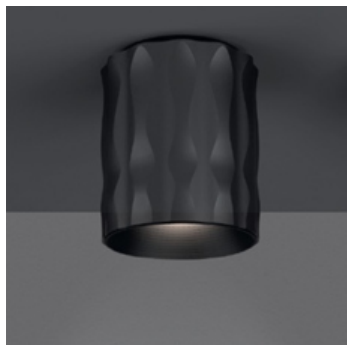


PRODUCT DATA SHEET

Fiamma Ceiling 15 - Black


DESIGN BY:

Wilmotte & Industries
2015

MATERIALS:

Aluminium

DESCRIPTION:

"Modular and adjustable, Fiamma works with a LED source base and a set of accessories to meet the different needs of lighting in hotels: bedside lamp, floor lamp, wall lamp, suspension light. The look is willing to be « domestic », to feel like being at home, in order to reinforce the cosines of the object." Fiamma is a systemic lighting element designed to respond to the needs of the contract sector, yet well suited also for everyday living environments. An anodized aluminium cylinder with a specific texture – a perfect combination of look and functionality – is the true luminous engine of the system. The light emitted by the LED source is cleverly controlled by a transparent diffuser, designed with an anti-reflex texture, to ensure visual comfort in all usage conditions. Different supports can be assembled on it, all made of carefully processed aluminium, to obtain a variety of versions – suspension, ceiling, reading, table.

SELECT

PRODUCT CODE

1988020A

Light emission

IP20

Dimmable

TECHNICAL DATA SHEET
FEATURES

Product name: Fiamma Ceiling 15 - Black
Article Code: 1988020A
Colour: Black
Material: Aluminium
Series: Design

DIMENSIONS

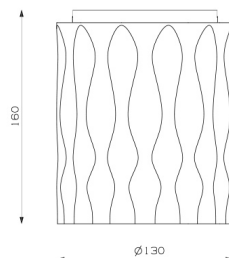
Height: cm 16
Diameter: cm 13

LAMPS INCLUDED

Category: LED COB
Number: 1
Watt: 20W
Luminous Flux (lm): 3200lm
Color temperature (K): 3000K
Class: A

LUMINAIR

Watt: 20W
Luminous Flux (lm): 1620lm
CCT: 3000K
CRI: 90
Dimmer
Dimmable

DIMENSIONS

COLOUR
